

# Cue Sheet

Guides for  
Teachers

## Around the Americas with 123 Andrés

Monday • May 12, 2025

### Questions to ask students **BEFORE** the performance

- How can you communicate with someone who doesn't speak the same language?
- Why do you think it is important to have different ways to communicate?
- What special traditions related to music, dance, or food does your family celebrate?

### Questions to ask students **AFTER** the performance

- Share something that you learned during the show.
- Describe the musical instruments you saw during the show.
- How do you think music helps people from different cultures connect?



## About the Performance

Latin Grammy Award-winning 123 Andrés makes their Schooltime Series debut with a high-energy, musical adventure across the Americas. Andrés and Christina are on a mission to find their friend Juana, but there's a challenge - she could be anywhere on the North or South American continents! With the help of music, dance, a special map, and audience members, these native Spanish speakers explore different countries and cultures to track Juana down. This lively geography lesson also incorporates an introduction to a variety of musical instruments, languages, cultures, and music as students learn the importance of communication.

Featuring vibrant visuals, engaging storytelling, and a mix of Spanish and English as well as some American Sign Language (ASL), 123 Andrés makes learning fun and unforgettable in this fast-paced, approximately 60-minute show. Known for their interactive performances, Andrés and Christina will have your students singing, dancing in their seats, and exploring every step of the way.



**Proudly sponsored  
by Rich & Michelle Dowdican**

# Vocabulary

**bilingual** (*bai-lin-gwuhl*) – to have the ability to speak and understand two languages

**continent** (*kon-tuh-nuhnt*) – a huge piece of land on Earth, often made up of multiple countries sharing borders

**country** (*cun-tree*) – a piece of land with its own set of laws and leaders; people from the same country often share a similar language and culture

**culture** (*kuhl-cher*) – the unique way of life, traditions, and beliefs that a group of people share, such as their food, celebrations, and language

**geography** (*jee-og-ruh-fee*) – the study of Earth's surface, including mountains, rivers, and where people live

**instrument** (*in-struh-ment*) – an object you use to make sounds and music

**language** (*lang-wih-juh*) – words, sounds, and sometimes gestures to share ideas and talk to each other

**map** (*m-ah-p*) – an image that shows you where places are, using colors and symbols to help you find your way around

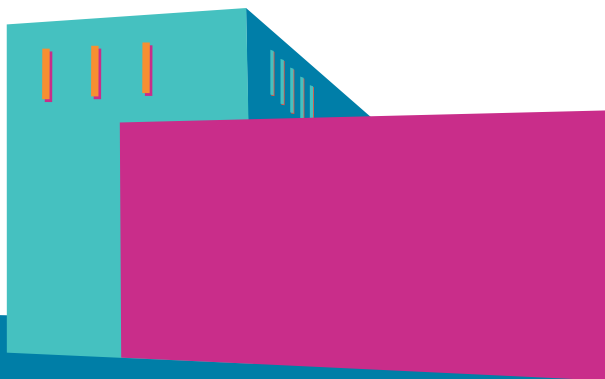
**movement** (*moo-v-muhnt*) – changing your position or moving from one place to another

# Theater Etiquette

- Stay with your chaperone at all times.
- Remove hats or caps when inside.
- Put away mobile phones and other electronic devices. Use of photographic, video recording, audio recording, phones, and gaming devices is prohibited during performances.
- Allow everyone to enjoy the performance by remaining quiet, except when a response is requested by performers. Some shows are interactive, while others are not.
- Stay seated and do not kick or hit the seat in front of you.
- Request to leave the hall with an adult chaperone if you need to use the restroom or cool down. If you are being disruptive, an adult chaperone may escort you out of the theater. You may view the show on screens in the lobby or lower lounge until you are ready to return with your chaperone.
- Clap after the end of a song during a musical or other music performance. During a ballet or dance performance, clap at the end of the number.
- Remain in your seats after the applause at the end of the show until our House Manager dismisses you.

## Click here!

To listen to some of the songs performed by the award-winning duo, visit the 123 Andrés YouTube channel.



# Facts about Popejoy Hall

- Popejoy Hall officially opened on October 1, 1966.
- The hall can seat up to 1985 people.
- Most walls inside the hall are not parallel or perpendicular to the stage. Curves, angles, and soft or textured surfaces scatter the sound throughout the hall so that audiences can hear performances better.
- Popejoy Hall has an orchestra pit which raises and lowers. It is the largest elevator in the building.
- The ceiling over the stage is three times the height of the curtain opening. Sets can be lowered into place by pulleys and raised high enough to be stored completely out of sight when not in use.