

Cue Sheet

Guides for
Teachers

A Year with Frog and Toad

Friday • April 11, 2025

Questions to ask students **BEFORE** the performance

- Tell me something you know about frogs. How are frogs different than toads?
- What activities do you do in the spring - what about the summer, fall, and winter?

Questions to ask students **AFTER** the performance

- How were Frog and Toad good friends to each other?
- What can you do in your life to be a good friend to others?



About the Performance

A Year with Frog and Toad is a heartwarming musical based on the book series that began with *Frog and Toad Are Friends* by Arnold Lobel in 1970. The show premiered in 2002 and was nominated for three Tony Awards, including Best Musical. The story celebrates the friendship of an unlikely pair of amphibian friends through all four seasons. Audiences are introduced to Frog, a cheerful and gentle character, and Toad, an impatient but good-hearted companion, as they navigate a year together. We join them when they awaken from hibernation in spring and follow the two while they, plant gardens, go swimming, enjoy cookies, and meet quirky characters such as birds, turtles, and snails. Through their experiences, Frog and Toad learn life lessons about patience, perseverance, and embracing differences.

The show celebrates the enduring power of friendship, highlighting how Frog and Toad support each other through trials and triumphs. Their contrasting personalities provide warmth and humor, showing that despite differences, true friendship can weather any season. With jazzy, upbeat music by Robert and Willie Reale, *A Year with Frog and Toad* captures the simple joys of life, celebrating companionship, kindness, and the beauty of shared experiences.

POPEJOY
**SCHOOLT
TIME
SERIES**

**Proudly sponsored
by Rich & Michelle Dowdican**

Vocabulary

amphibians (*am-fi-bee-uhnz*) – cold-blooded animals that live in water and on land

climate (*klai-muht*) – average weather conditions in a place over a long period of time

differences (*di-fr-uhn-suhz*) – ways things are not the same

friendship (*frend-shuhp*) – a close relationship between people who care for each other

garden (*gaar-dn*) – a place where people grow plants, flowers, fruits, and vegetables

hibernation (*hai-br-nay-shn*) – when animals sleep for long periods of time during winter to survive cold temperatures and lack of food

jazz (*jaz*) – a style of American music known for lively rhythms and improvisation

patience (*pay-shns*) – the ability to wait calmly without getting upset

season (*see-zn*) – a period of the year with a specific type of weather

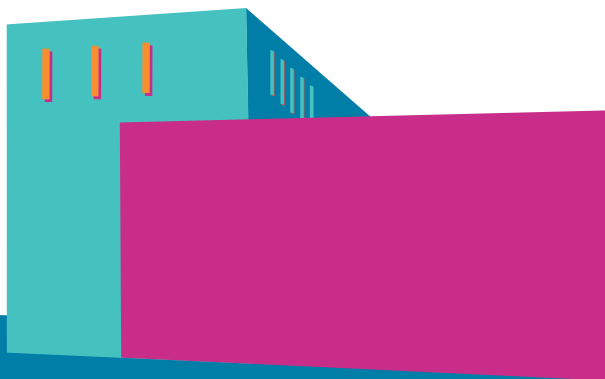
weather (*weh-thr*) – the conditions outside at a given time and place

Theater Etiquette

- Stay with your chaperone at all times.
- Remove hats or caps when inside.
- Put away mobile phones and other electronic devices. Use of photographic, video recording, audio recording, phones, and gaming devices is prohibited during performances.
- Allow everyone to enjoy the performance by remaining quiet, except when a response is requested by performers. Some shows are interactive, while others are not.
- Stay seated and do not kick or hit the seat in front of you.
- Request to leave the hall with an adult chaperone if you need to use the restroom or cool down. If you are being disruptive, an adult chaperone may escort you out of the theater. You may view the show on screens in the lobby or lower lounge until you are ready to return with your chaperone.
- Clap after the end of a song during a musical or other music performance. During a ballet or dance performance, clap at the end of the number.
- Remain in your seats after the applause at the end of the show until our House Manager dismisses you.

Click here!

For more educational resources, download an **A Year With Frog & Toad** study guide, prepared by the Casa Mañana Performing Arts Conservatory.



Facts about Popejoy Hall

- Popejoy Hall officially opened on October 1, 1966.
- The hall can seat up to 1985 people.
- Most walls inside the hall are not parallel or perpendicular to the stage. Curves, angles, and soft or textured surfaces scatter the sound throughout the hall so that audiences can hear performances better.
- Popejoy Hall has an orchestra pit which raises and lowers. It is the largest elevator in the building.
- The ceiling over the stage is three times the height of the curtain opening. Sets can be lowered into place by pulleys and raised high enough to be stored completely out of sight when not in use.