

Cue Sheet

Guides for
Teachers

Underneath a Magical Moon

Monday • March 31, 2025

Questions to ask students **BEFORE** the performance

- Describe how you use your imagination when you play with your friends.
- Tell me something that you know about the story of Peter Pan.

Questions to ask students **AFTER** the performance

- How did the show differ from the Peter Pan story you were familiar with?
- Imagine a fantasy world you could visit with your friends and family. What would it be like?
- Find an object in the room and use your imagination to pretend it's something else. What is it?



About the Performance

J.M. Barrie's original story of Peter Pan, about a boy who never grows up, began as a play in 1904. It was later adapted by Barrie into a novel. *Peter Pan's* story follows Wendy and her brothers who fly to the fantasy world of Neverland with Peter. In the story, Wendy serves as a mother-like figure to the Lost Boys, led by Peter. *Underneath a Magical Moon*, by Mike Kenny, retells this classic story through the voice of Wendy Darling.

Presented by children's theatre company Tutti Frutti, the show is set in an ordinary backyard one summer evening where three children - Wendy, John, and Michael - sleep outside under the moon. Using their imaginations, they begin to portray Peter himself, the villainous Captain Hook, Neverland's lagoon mermaids, and more. The production features live music and song, as well as stage magic (made possible with a sprinkle of pixie dust). Under the moonlight, Wendy and her brothers conjure up Neverland using everyday props and clever costumes.



Proudly sponsored
by Rich & Michelle Dowdican

Vocabulary

adventure (*uhd-ven-chr*) – an exciting trip or experience

ardent (*aar-dnt*) – with intense emotion

captain (*kap-tuhn*) – the person in command of a ship

din (*din*) – a loud or harsh noise

fairy (*feh-ree*) – a small imaginary creature that looks like a very small human being, has magic powers, and sometimes has wings

fantasy (*fan-tuh-see*) – a story about things that happen in an imaginary world

flying (*flai-uhng*) – moving freely in the air

mermaid (*mur-mayd*) – a mythical half-human sea creature with a woman's body and fish's tail

moon phase (*mu-n fayz*) – changing shapes of the moon that can be seen from Earth due to reflecting light from the sun

pirate (*pai-ruht*) – a person who attacks and robs ships at sea

shadow (*sha-dow*) – a dark shape/figure formed when an object is between the path of light rays

ship (*sh-i-p*) – a vessel larger than a boat for transporting people or goods by sea

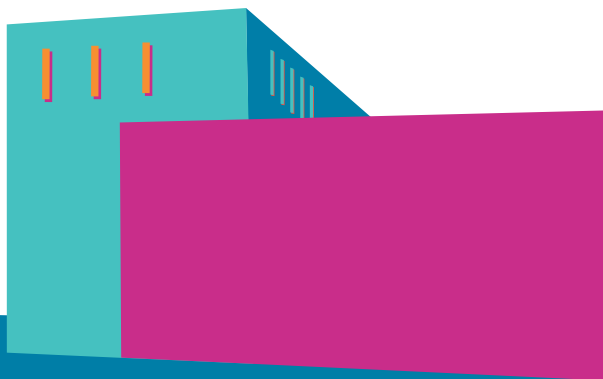
villainous (*vi-luh-nuhs*) – very bad or evil

Theater Etiquette

- Stay with your chaperone at all times.
- Remove hats or caps when inside.
- Put away mobile phones and other electronic devices. Use of photographic, video recording, audio recording, phones, and gaming devices is prohibited during performances.
- Allow everyone to enjoy the performance by remaining quiet, except when a response is requested by performers. Some shows are interactive, while others are not.
- Stay seated and do not kick or hit the seat in front of you.
- Request to leave the hall with an adult chaperone if you need to use the restroom or cool down. If you are being disruptive, an adult chaperone may escort you out of the theater. You may view the show on screens in the lobby or lower lounge until you are ready to return with your chaperone.
- Clap after the end of a song during a musical or other music performance. During a ballet or dance performance, clap at the end of the number.
- Remain in your seats after the applause at the end of the show until our House Manager dismisses you.

Click here!

For additional information about the show, including a sample study guide and curriculum connections.



Facts about Popejoy Hall

- Popejoy Hall officially opened on October 1, 1966.
- The hall can seat up to 1985 people.
- Most walls inside the hall are not parallel or perpendicular to the stage. Curves, angles, and soft or textured surfaces scatter the sound throughout the hall so that audiences can hear performances better.
- Popejoy Hall has an orchestra pit which raises and lowers. It is the largest elevator in the building.
- The ceiling over the stage is three times the height of the curtain opening. Sets can be lowered into place by pulleys and raised high enough to be stored completely out of sight when not in use.